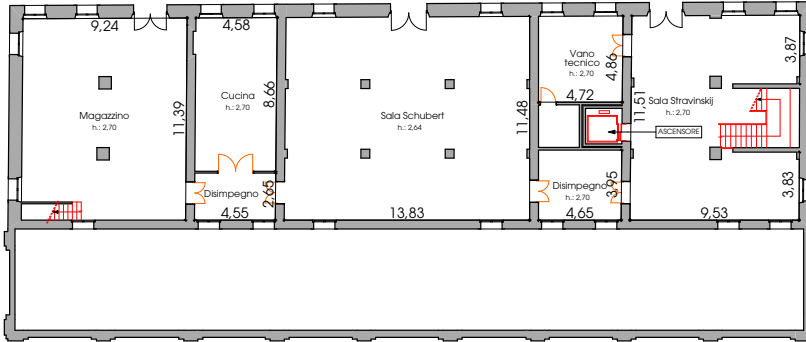




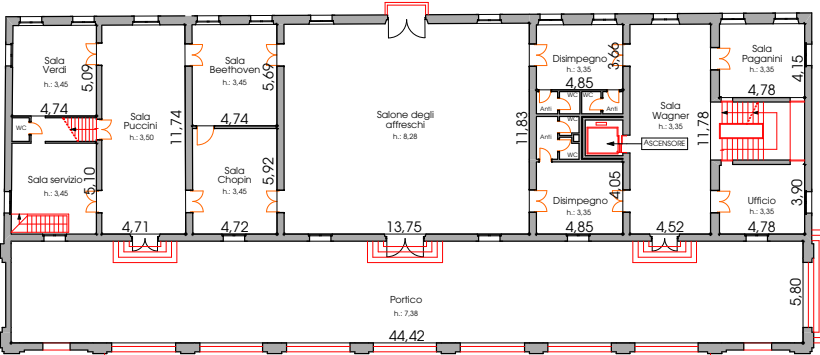
Villa Foscari Rossi

DIMENSIONI



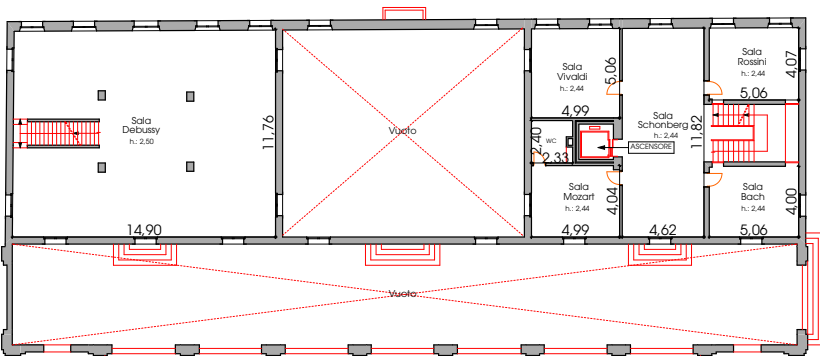
PIANO CANTINA

Superficie totale: 400 mq
 Magazzino: 9,24 x 11,39 m
 Cucina: 4,58 x 8,66 m
 Disimpegno: 4,55 x 2,65 m
 Sala Schubert: 13,83 x 11,48 m
 Vano tecnico: 4,72 x 4,86 m
 Disimpegno: 4,65 x 3,95 m
 Sala Stravinskij: 9,53 x 11,51 m



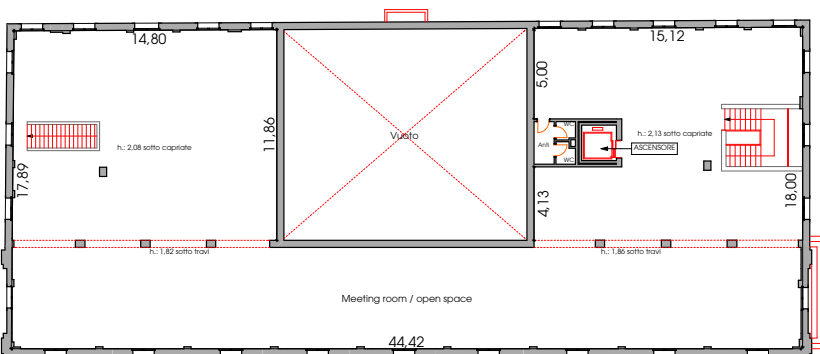
PIANO TERRA

Superficie totale: 600 mq
 Sala Verdi: 4,74 x 5,09 m
 Sala di servizio: 4,74 x 5,10 m
 Sala Puccini: 4,71 x 11,74 m
 Sala Beethoven: 4,74 x 5,69 m
 Sala Chopin: 4,72 x 5,92 m
 Salone degli affreschi: 13,75 x 11,83 m
 Disimpegno: 4,85 x 3,66 m
 Disimpegno: 4,85 x 4,05 m
 Sala Wagner: 4,52 x 11,78 m
 Sala Paganini: 4,78 x 4,15 m
 Ufficio: 4,78 x 3,90 m
 Portico: 44,42 x 5,80 m



PIANO MEZZANINO

Superficie totale: 300 mq
 Sala Debussy: 14,90 x 11,76 m
 Sala Vivaldi: 4,99 x 5,06 m
 Sala Mozart: 4,99 x 4,04 m
 Sala Schonberg: 4,62 x 11,82 m
 Sala Rossini: 5,06 x 4,07 m
 Sala Bach: 5,06 x 4,00 m



PIANO MANSARDA

Superficie totale: 560 mq
 Meeting room / Open Space: 44,42 x 18 m (dimensioni massime)
 Media lato sinistro: 14,80 x 11,86 m
 Media lato destro: 15,12 x 9,13 m
 Media corridoio: 44,42 x 6,03 m

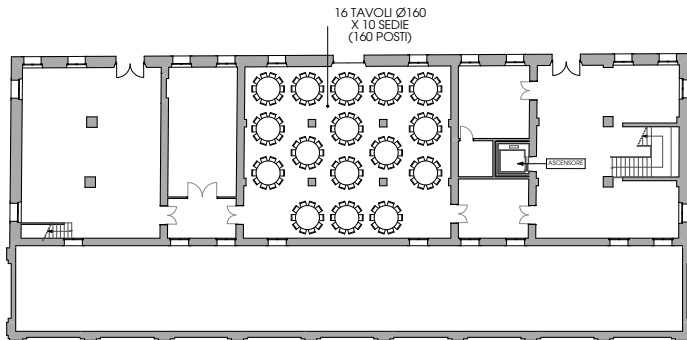


Villa Foscari Rossi

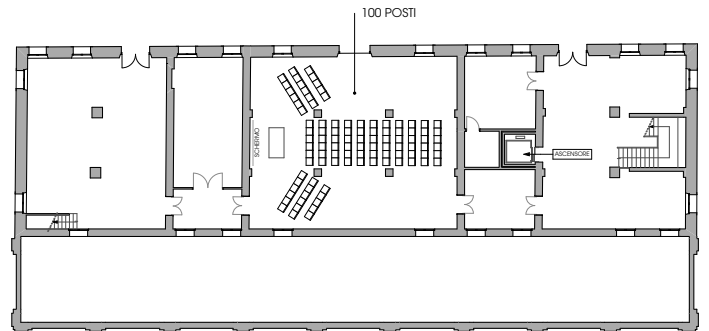
CAPIENZE

PIANO CANTINA

> CONVIVIALE fino a 160 posti



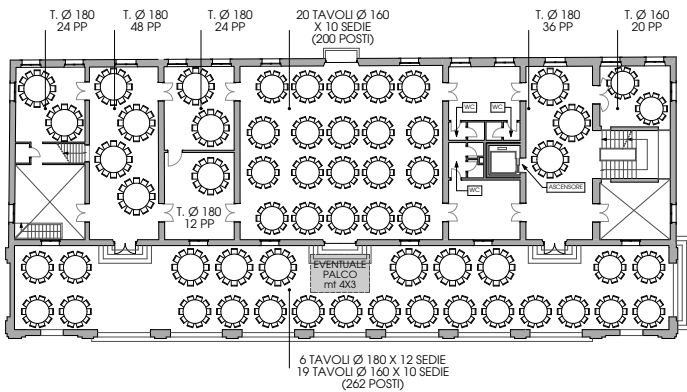
> MEETING fino a 100 posti



PIANO TERRA

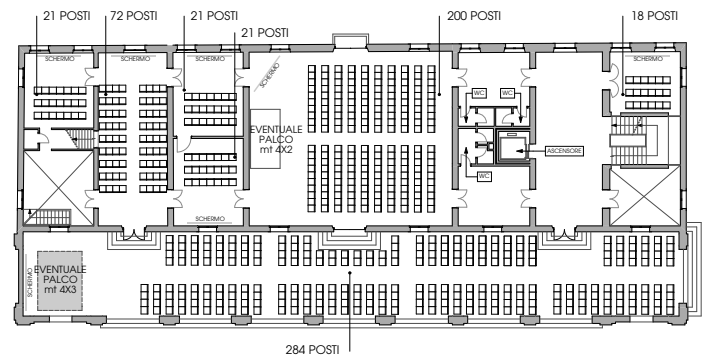
> CONVIVIALE

Spazi interni fino a 364 posti / *Portico fino a 262 posti



> MEETING

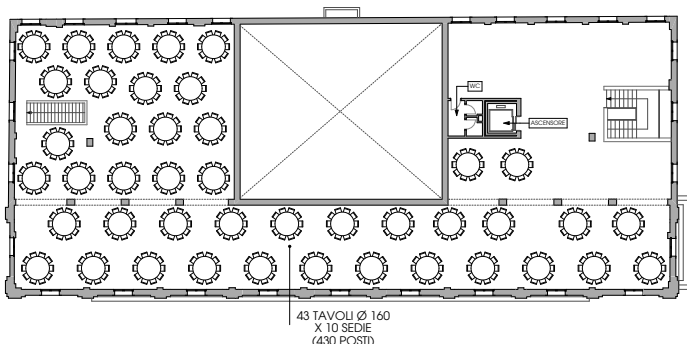
Spazi interni fino a 353 posti / *Portico fino a 264 posti



*Nella stagione invernale il Portico viene chiuso a veranda e riscaldato

PIANO MANSARDA

> CONVIVIALE fino a 430 posti



> MEETING fino a 510 posti

