



CONGRESS & TRAINING CENTER





 Palazzo della Salute

“Palazzo della Salute” has risen from the building renovation of the former **Saint Francis The Great’s Hospital**, in Padua’s historical center. It’s a multifunctional venue for **events** and **congress**.



Palazzo della Salute

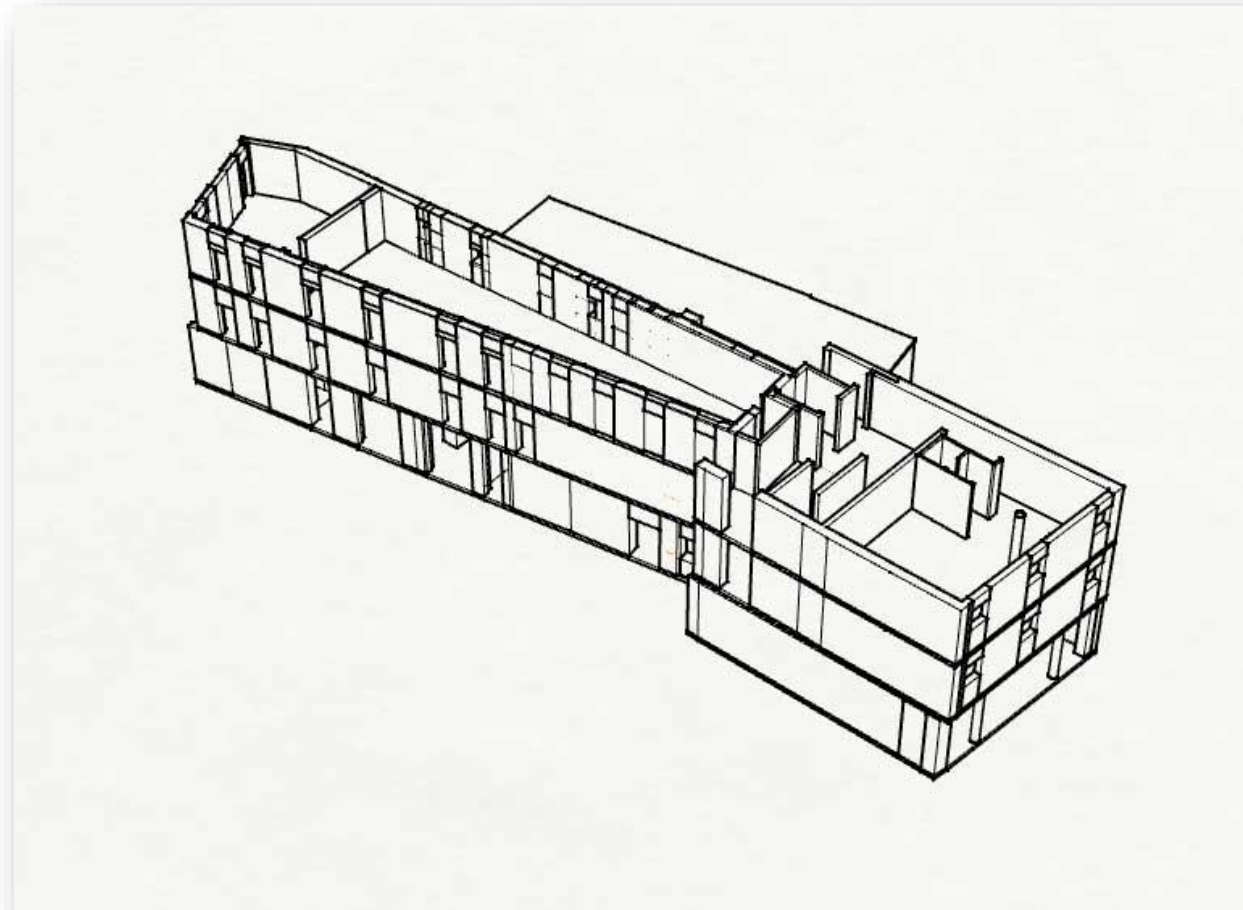
- PALAZZO DELLA SALUTE is divided into three floors, with a surface of 3700 square meters.
- Inside you'll find different areas dedicated to congress and educational courses, equipped with modern technologies for communication and didactics.
- The first building in the world dedicated to training, communication, scientific publication and history of medicine.



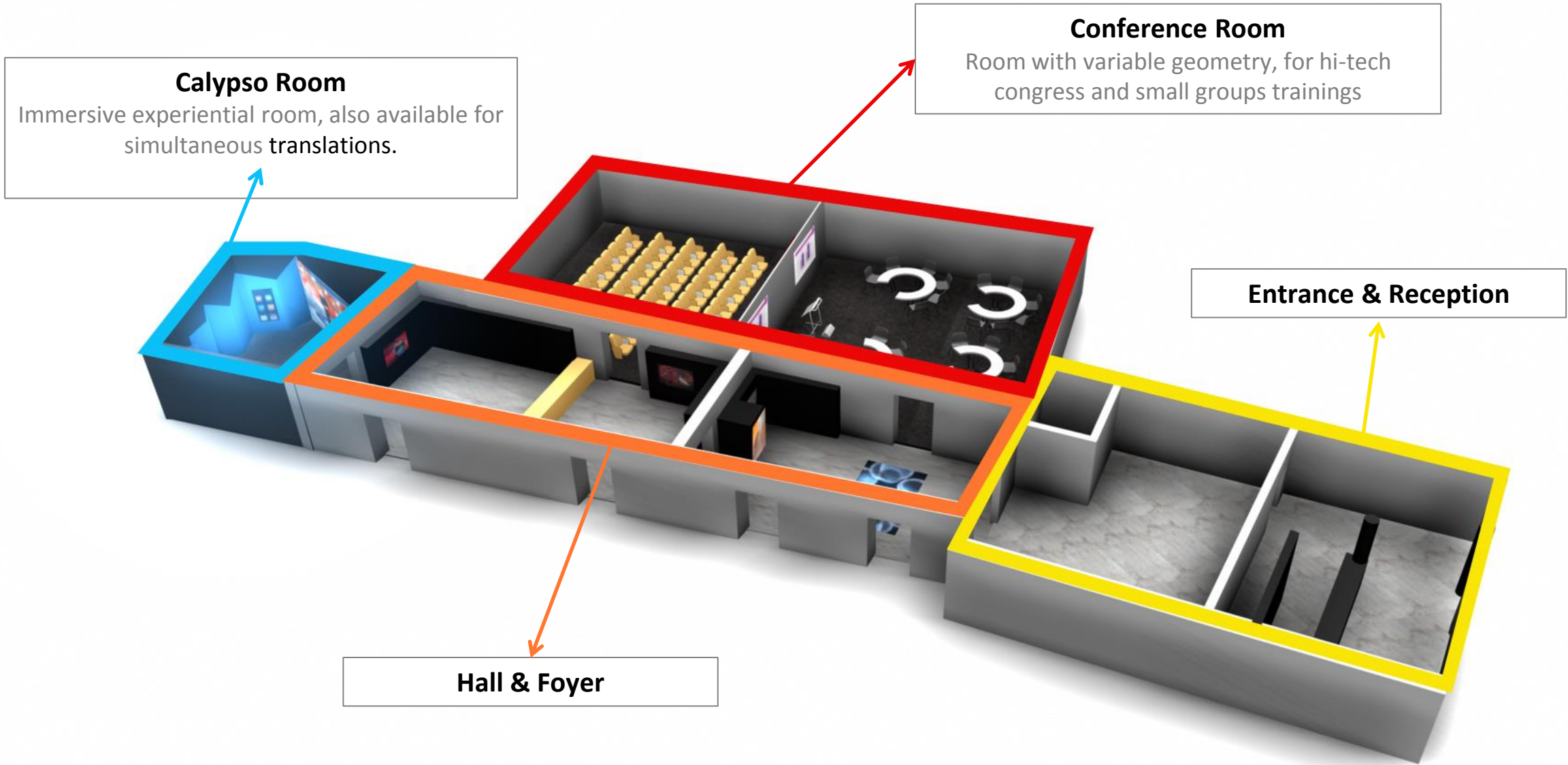
Palazzo della Salute – Congress Center

Available spaces

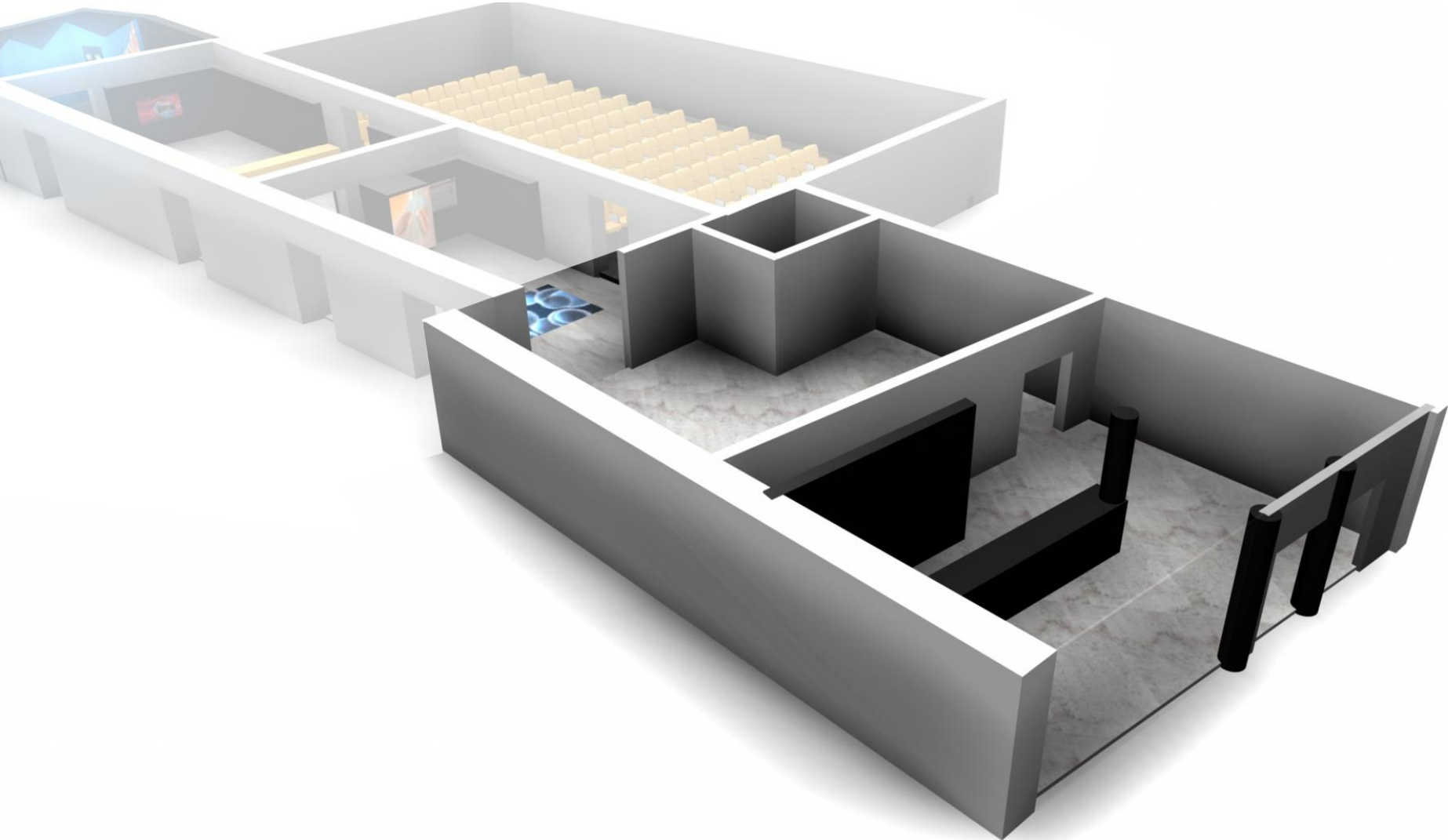
The congress area covers **1645 square meters** divided into three floors on the right side of Palazzo della Salute.



Congress center – ground floor



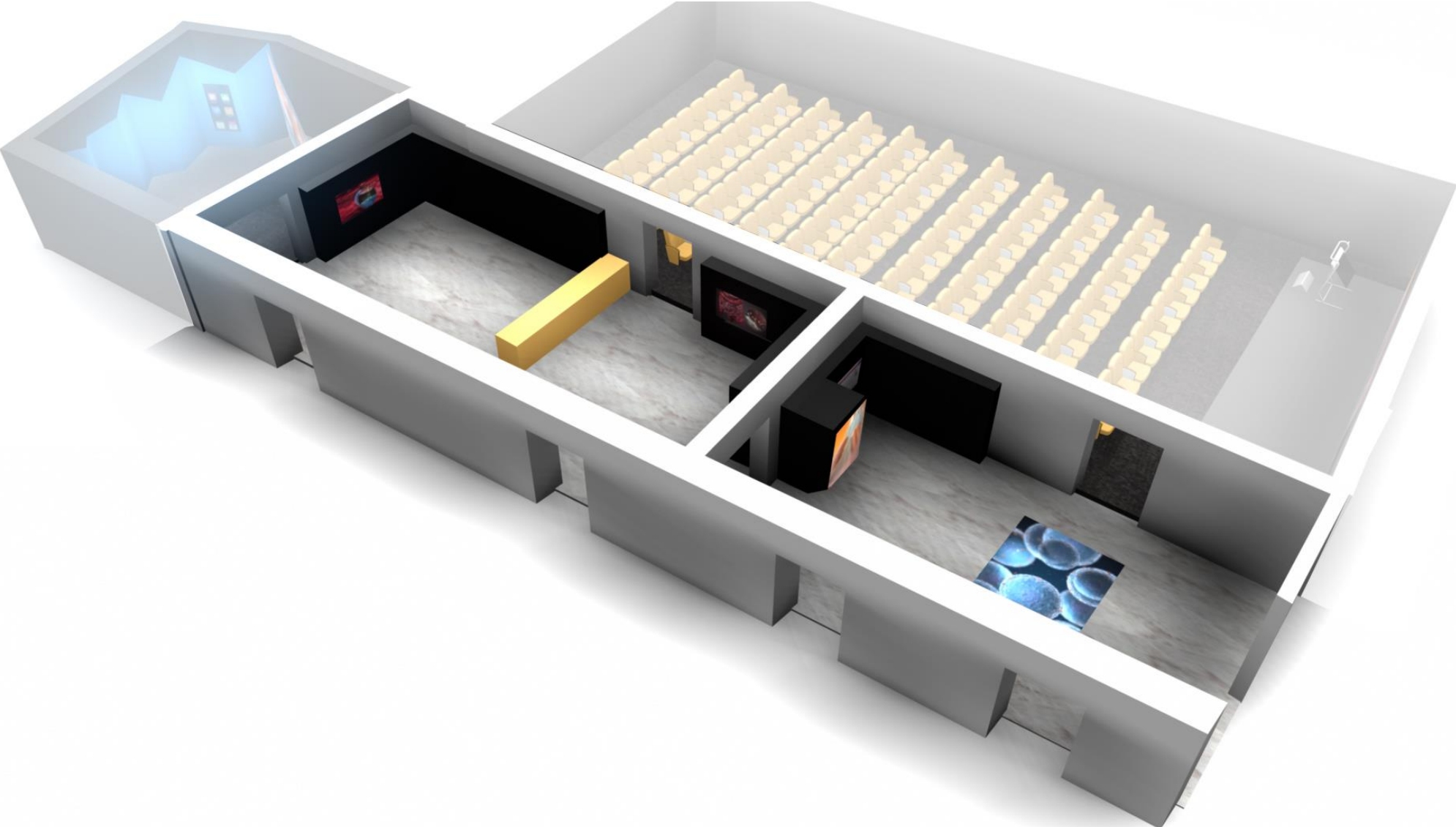
Entrance & Reception





Entrance & Reception

Hall & Foyer



Hall & Foyer

In the Hall and in the Foyer participants have the opportunity to discover the «Technological DNA» of Palazzo della Salute:

- An «**interactive floor**», with graphics and contents customized depending on each event, welcomes the participants, introducing them in a technological environment completely different from the traditional congress centers.
- A «**sensitive-wall**», based on a technology that recognizes movements, allows them to navigate through scientific contents.
- A «**remote motion-controller**» allow them to move, rotate and explore scientific 3D objects (anatomical parts, molecules, etc...).
- 3 **LED monitors** are used to show information customized for each event (agenda, promotional materials, video, etc...)
- A **rear projected screen** displays images of Padua, highlighting the importance of the city in the history of Modern Medicine (the University of Padua is the second oldest in the world)



Hall – First Part



Foyer – Second Part (coffee break area)

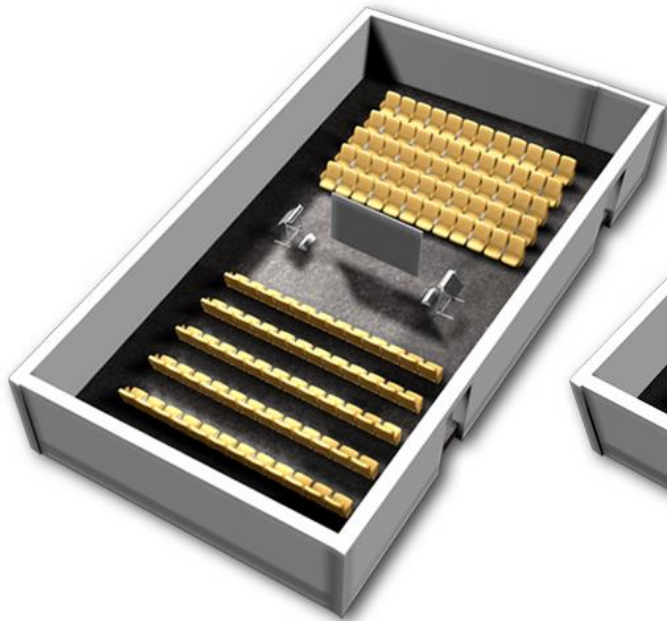
Conference Room

This 153 square meters room is used for conferences and frontal lessons, with a strong multimedial inclination.

- 4 projectors
- 6*3 meters platform
- A Live direction room with multiple cameras of symposiums, with a strong spectacular effect and innovative technology.
- A Multitouch table, used to run plenary “discussion” presentations.
- Tablets (iPad) available to let participants interact with speakers.

Conference Room - Elettra

Elettra Room is a highly flexible modular room for meetings and conferences. These are the four possible configurations:



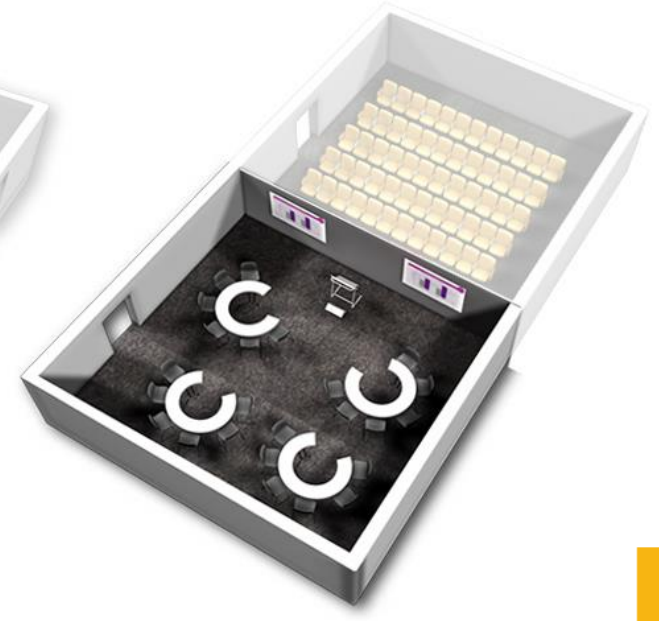
PLENARY Arena



PLENARY Frontal



ELETTRA stalls

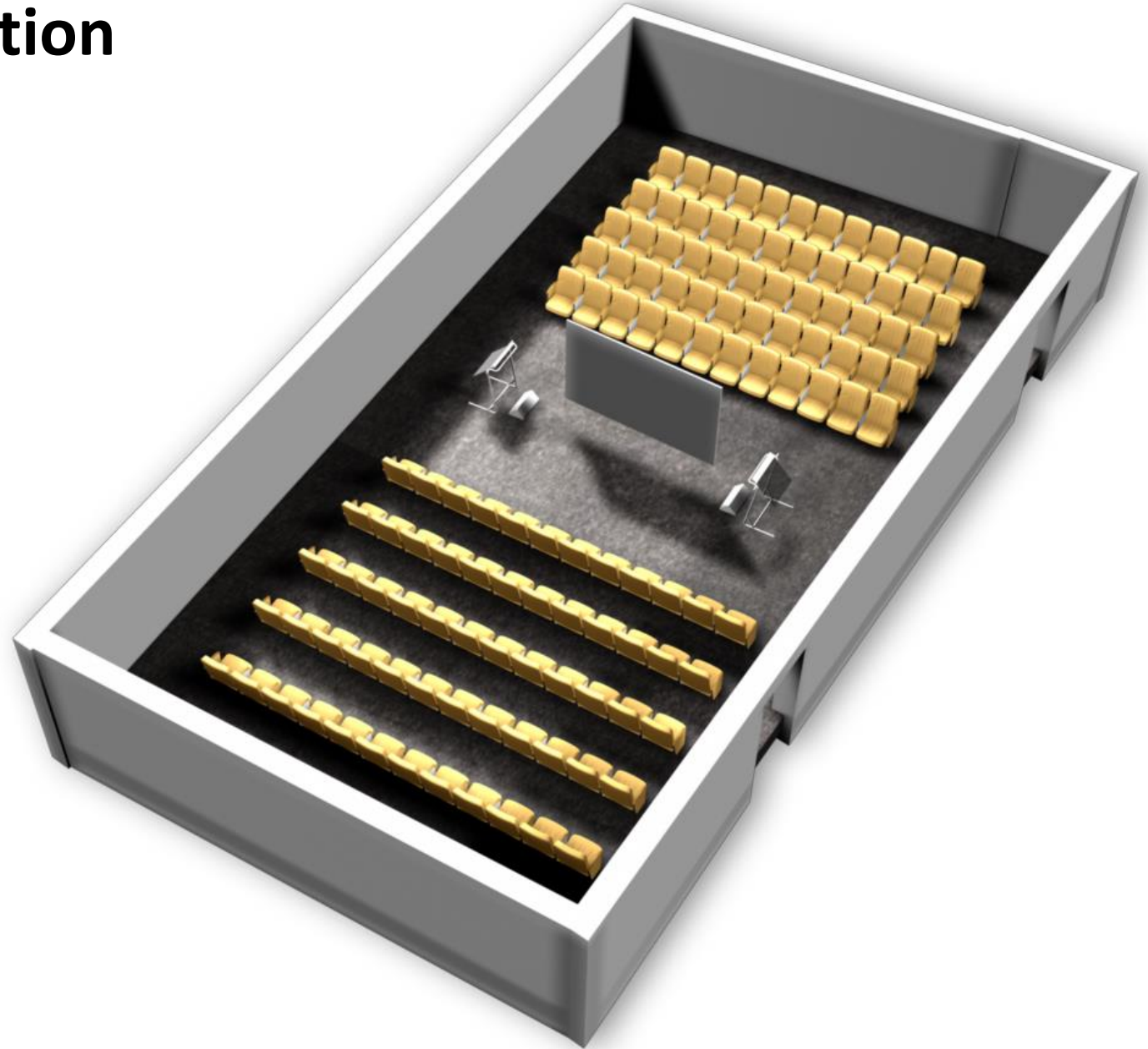


ELETTRA for
small groups

Plenary Arena configuration

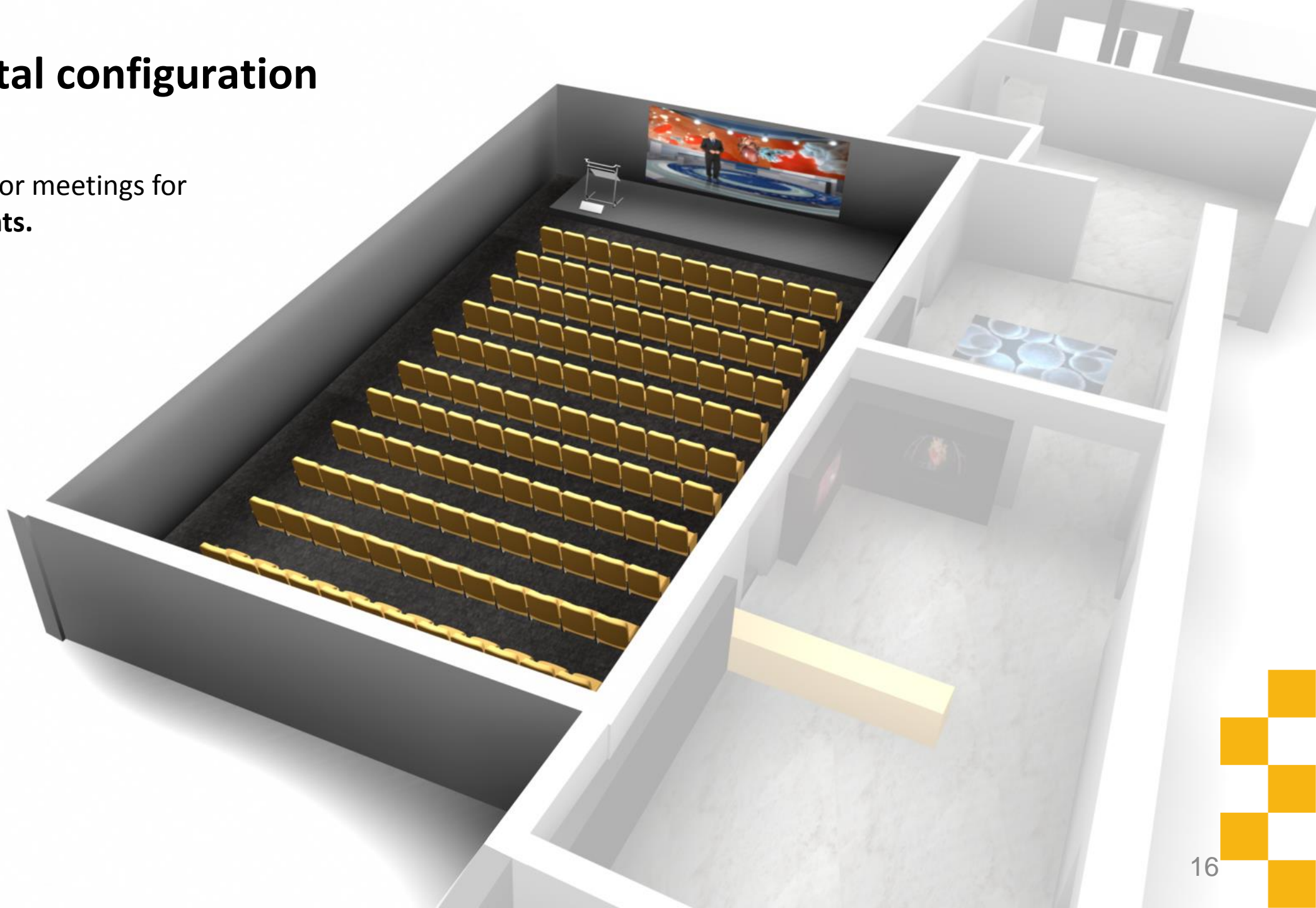
This configuration is ideal for a **150 participants** meeting.

The setting is very effective for conferences with a significant number of discussions and contradictory.



Plenary Frontal configuration

This setting is ideal for meetings for up to **200 participants**.



"Non-human" glycans:

✓ Humans: does not synthesize



Galactose-6 β -D-galactosyl (asialo- α 2-6-galactosyl) - not found in human glyco



6-glycosyl neuraminic acid (6GNA) - found in ~1% of complete N-linked glycans in human glyco

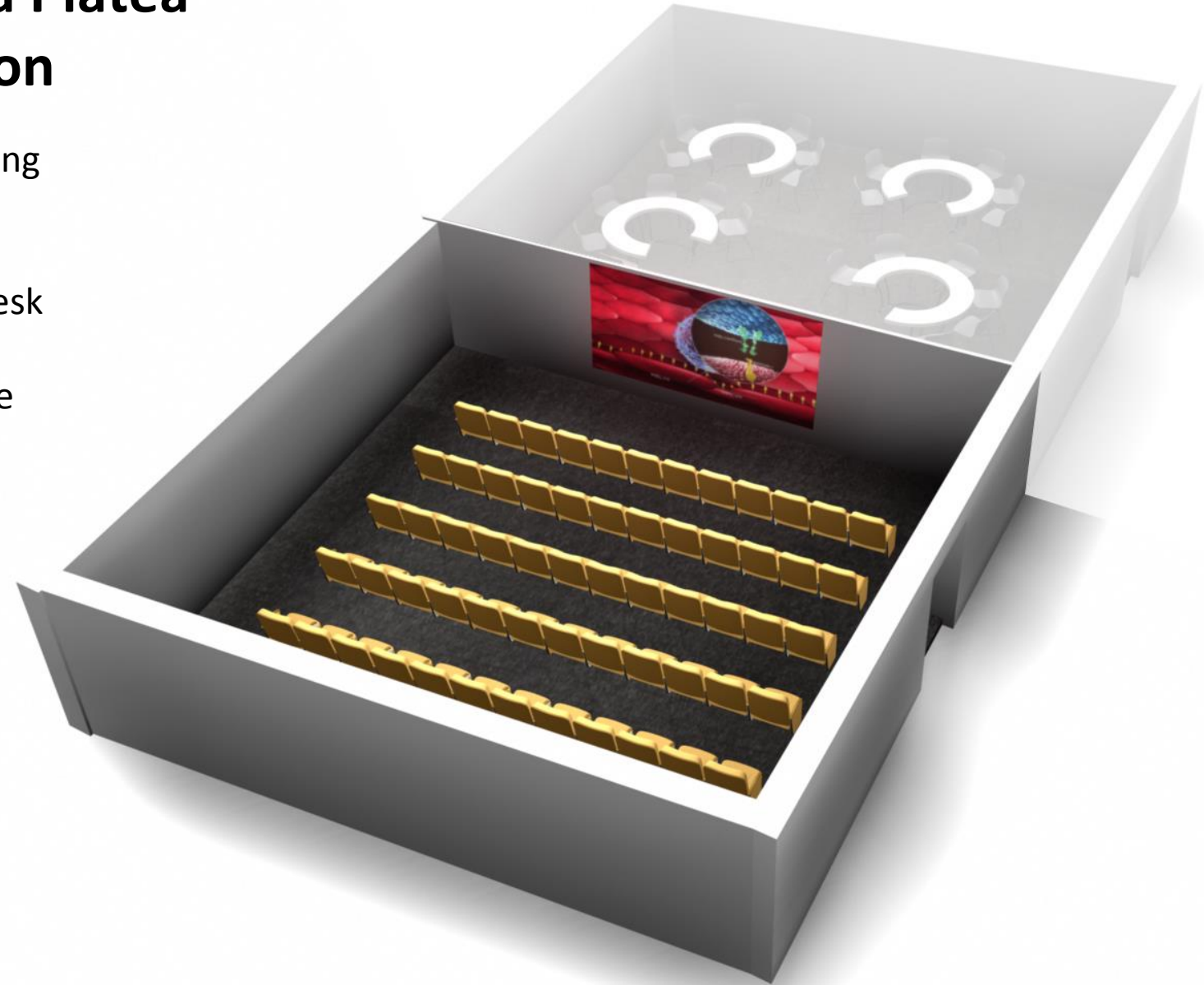
Human glycans: - fucose, - mannose, - galactose, - 6-glycosyl neuraminic acid, + 9-glycosyl neuraminic acid

Configurazione Elettra a Platea

Elettra Stall configuration

This configuration is ideal for a meeting up to **84 participants**.

The speaker can use an interactive desk to navigate through contents, show presentations and ask multiple choice questions to the audience.



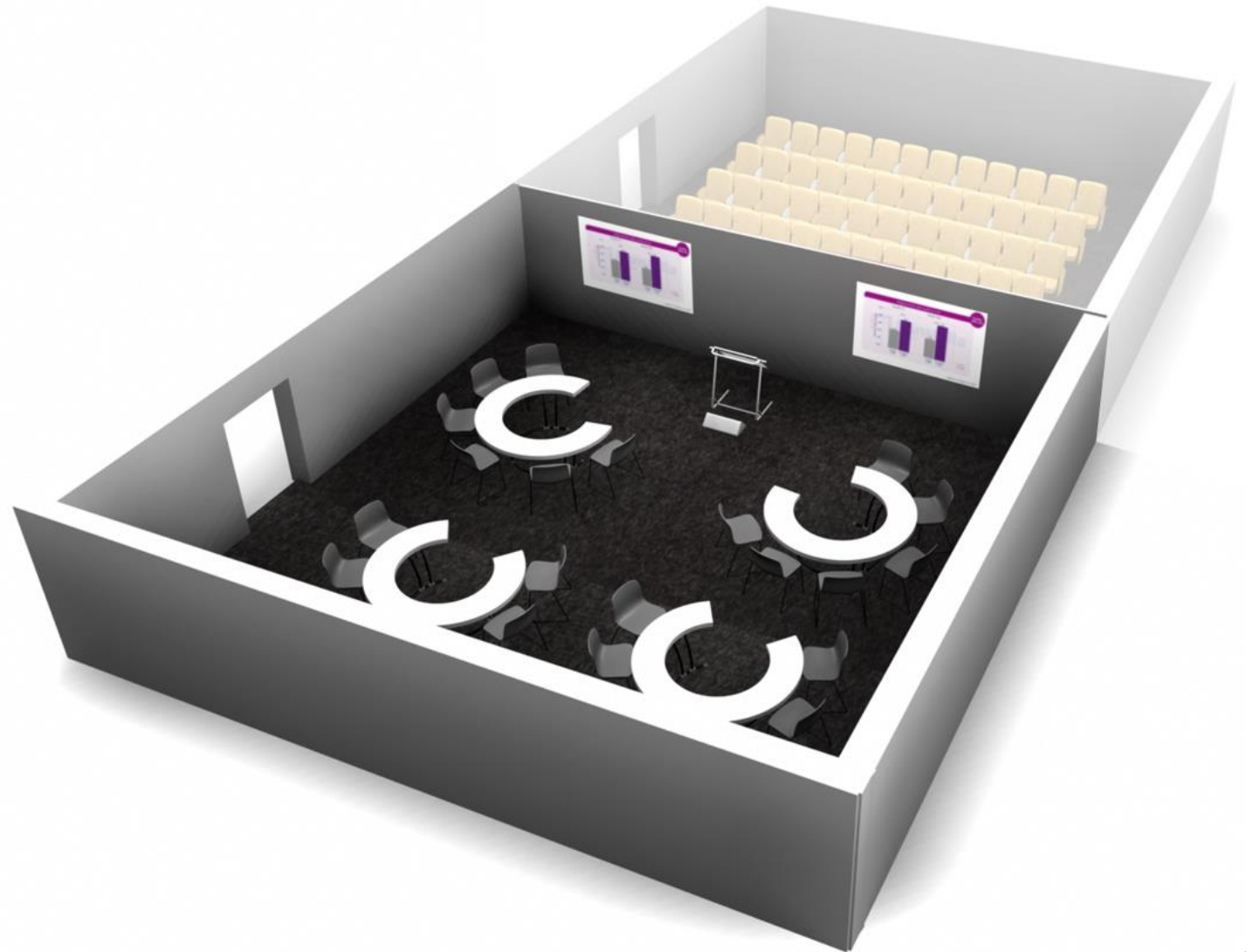


Elettra stalls

Elettra for small groups

This setting is ideal for small meetings for up to **32 participants**.

The tables' shape is very effective for small work groups; the speaker can use an interactive desk to browse through the contents, show presentations and ask multiple choice questions to the stalls.





Elettra small groups





RELOAD
IL FUTURO DEI TRAPIANTI OGGI

When is monitoring of FVIII therapy useful?

Non-bleeding state

- Establishing and adjusting dose and frequency to achieve recommended target levels of FVIII for prophylaxis^{1,2}
- Pharmacokinetic evaluation (for tailored prophylaxis)^{1,2}

Bleeding state

- Emergency bleeding³
- Peri-operative monitoring¹
- Therapy resistant bleeding (inhibitor development)¹

1. Collins et al. *Haemophilia* 2009; 13(1): 121-125
2. Srivastava et al. *Haemophilia* 2009; 13(1): 126-130
3. Hanley J. *Haemophilia* 2009; 13(1): 131-135

are for assessment and treatment 2009. <http://www.uthcdo.org/docs/EmergencyCareStandardsFinalVersionJune2009%20Website.pdf>

pdFVIII vs rFVIII INHIBITOR INCIDENCE SYSTEMATIC REVIEW

24 studies - 2,094 patients (1,167 pdFVIII; 927 rFVIII)

pdFVIII 14.3 % (10.4 – 19.4)

rFVIII 27.4% (23.6 – 31.5)

After multi-way ANOVA

Significant differences: study design, study period, testing frequency

Type of concentrate lost statistical significance

lorio et al. JTH 2010;8:1256-65

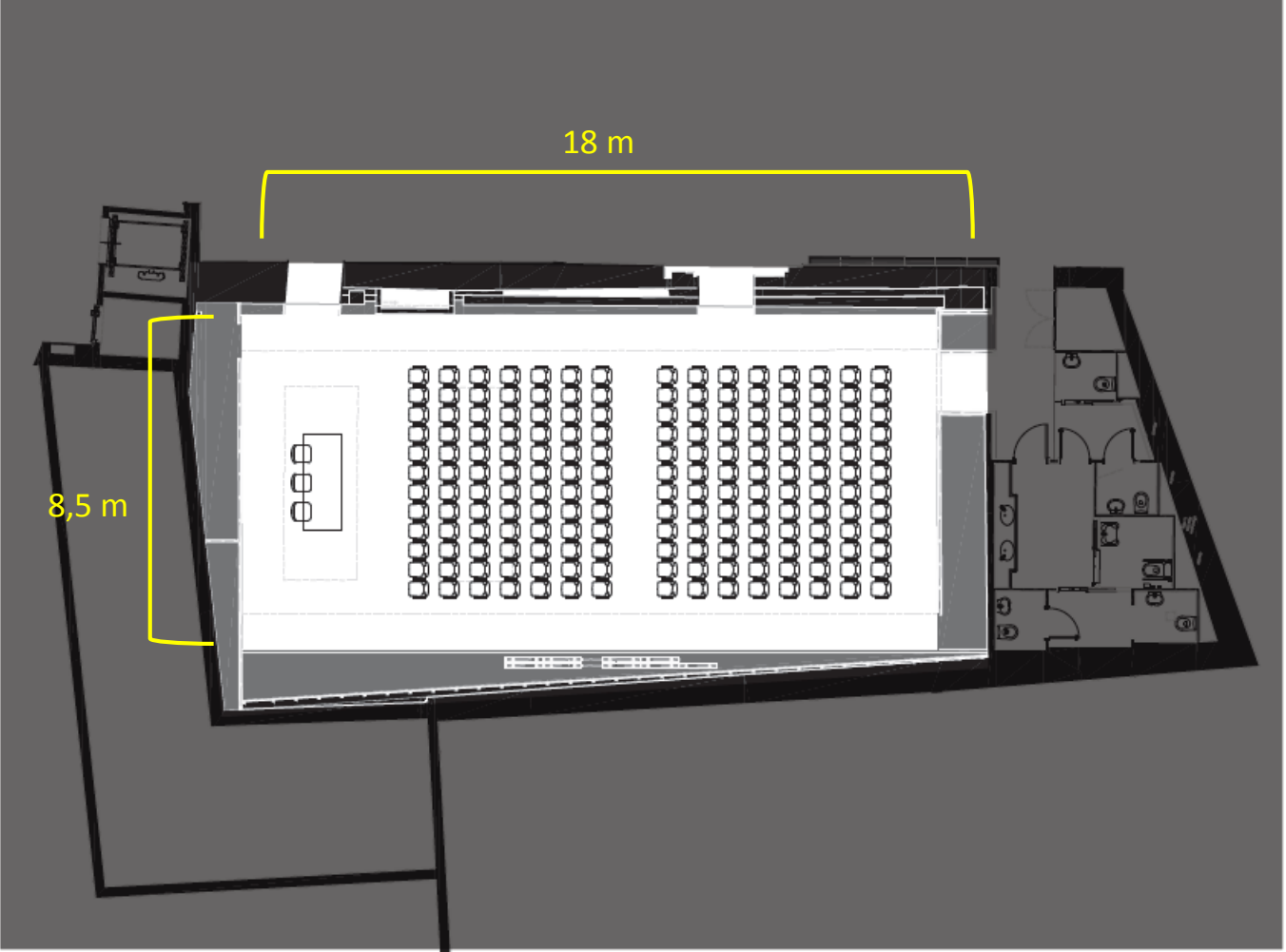
Key issues to be considered for implementation of PK-tailored prophylaxis

What FVIII trough level is needed to prevent any bleed?

Do patients with target joints need higher FVIII trough levels to stay bleed-free?

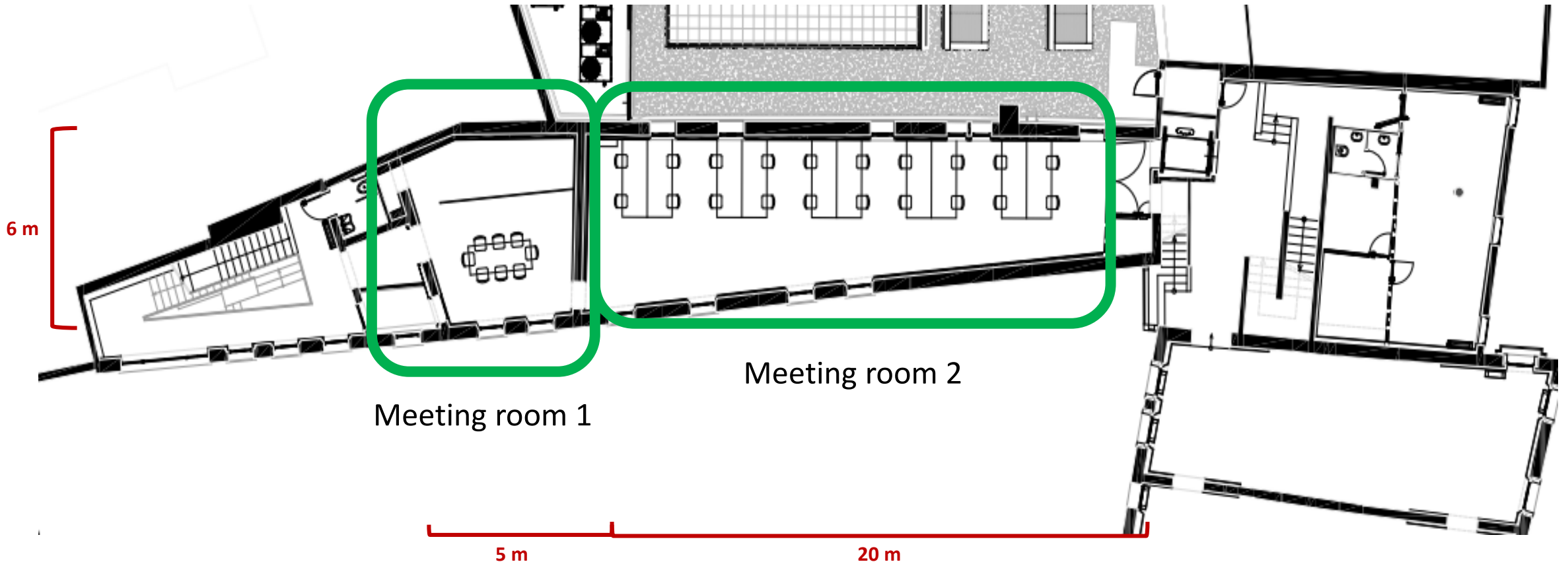
Are there user-friendly tools available to calculate individualized PK-driven prophylaxis doses and frequency without the need for a full 9-sample PK curve?

Dimensions



Congress area meetin rooms – second floor

The second floor hosts two rooms that can be used during events for meetings, workshops or other needs.



Astrid Room – Second Floor

A small and cozy room with a pc and a projector.

Ideal for small meetings, workshops or as a support (break-out room?) room for first floor rooms.

It can host up to 20 people, with the possibility to modify the setting.



Argo Room – Second Floor

A large room with a pc and a projector, can be settled depending on the needs of the stalls with working tables or with a single presidential table. It can be used for parallel work sessions.

Here there is natural light and a beautiful view of the cloister. It can me connected to the first floor rooms.



Artemis Rooms – Third Floor

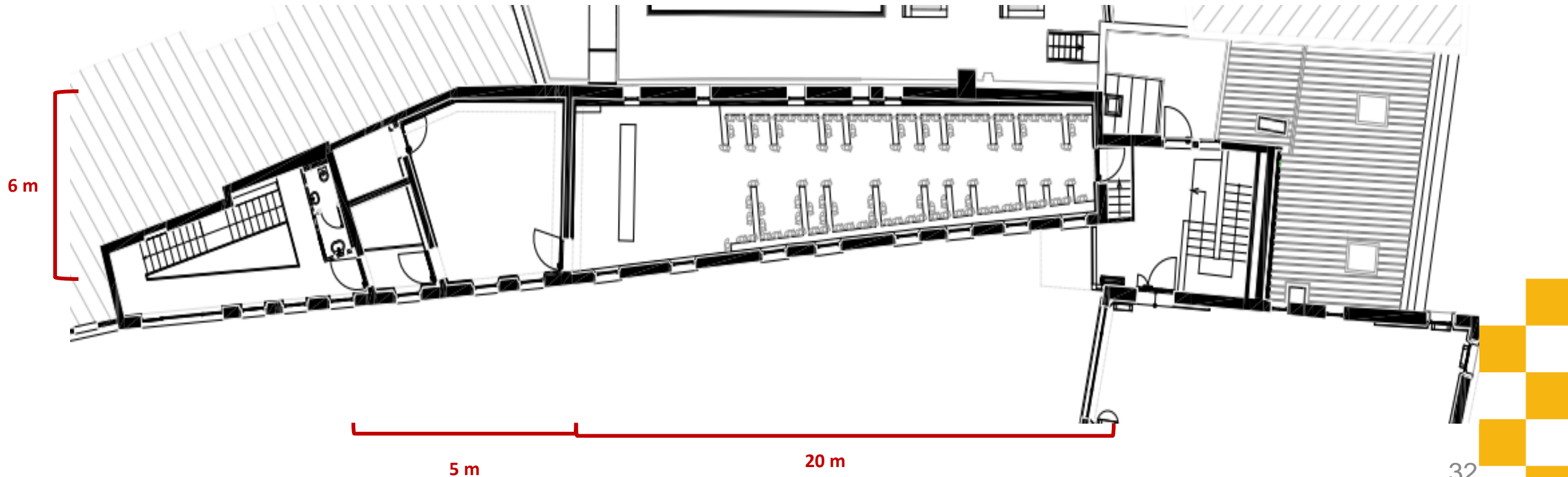
Rooms with pc and projectors, it can be settled depending on the needs of the stalls with working tables or with a single presidential table.

It can be used for parallel working sessions.



Congress Area– Lunch room

The second floor is used as a dining area for buffet lunches.
It has a side room reserved to the catering for food and plates preparation.



Congress Area – Lunch Room

- The lunch rooms are perfect for standing buffet, but it also has resting tables and stools.
- The configuration is ideal for fast but comfortable work lunches.



The cloister

- Palazzo della Salute's cloister can be used during warm seasons for served lunches.
- Capacity for gala dinner (seated): 150 people, with the possibility to add 250 more people using also the portico.



The Museum

Palazzo della Salute host the innovative **MUSME – The Museum of History of Medicine in Padua.**

Balancing the past and the future, MUSME revolutionizes the concept of scientific museum, combining History and Technology.

Neither typical collection of relics, nor simple science centre, it merges and renovates different museum approaches and captivates everyone, by offering an exhibition itinerary fitting each visitor: from playful story-telling for the younger ones, to in-depth scientific learning for scholars.



MUSEO DI STORIA DELLA
MEDICINA IN PADOVA

www.musme.it/en

A MUSEUM BETWEEN PAST AND FUTURE

MUSME combines **History** and **Technology**.

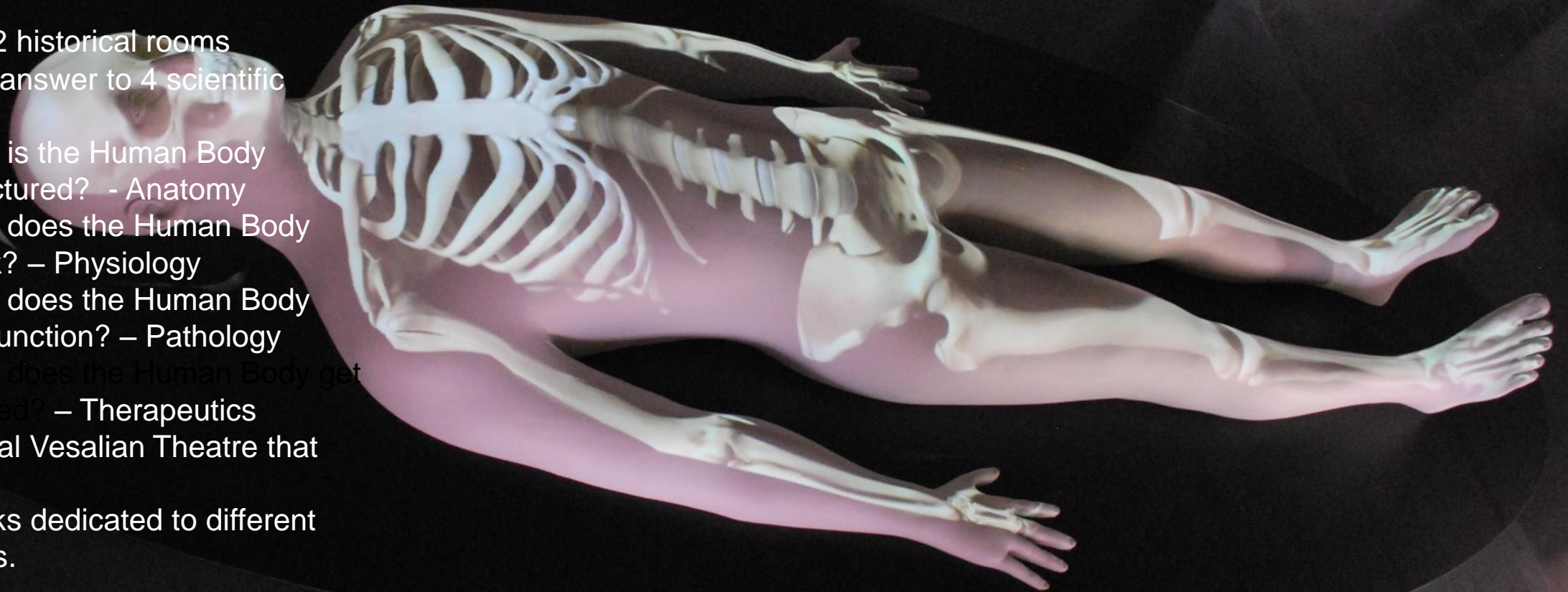


It is a next generation museum, illustrating – both rigorously and entertainingly – the extraordinary journey of Medicine from ancient discipline to modern science, with a keen eye on the history of **Padua's medical school**.



THE HUMAN BODY AT THE CENTER OF THE PATH

- First floor: 2 historical rooms
- 4 rooms to answer to 4 scientific questions:
 - How is the Human Body structured? - Anatomy
 - How does the Human Body work? – Physiology
 - How does the Human Body malfunction? – Pathology
 - How does the Human Body get healed? – Therapeutics
- 1 Anatomical Vesalian Theatre that host:
 - 8 nooks dedicated to different organs.



THE VISITOR IS THE PROTAGONIST DURING THE VISIT



At MUSME the visitor is not only a viewer but can also **interact with lots of interactive stations**

Using all of his **senses**.

Both the language and the narrative path address a **wide public** and not only the «insiders».

The presence of virtual tutors make MUSME a highly **self explanatory** museum.





MUSME'S VISITORS

From the inauguration (June 2015) MUSME hosted more than **75.000** visitors and hundreds of Congresses took place at Palazzo della Salute



THE VESALIAN ANATOMICAL THEATRE: DINNERS AND APERITIFS

The central salon of the museum, built on two floors, can be used for gala dinners and aperitifs

- Capacity for gala dinners (seated): max 150 people
- Capacity for aperitifs (standing): max 300 people





